

CAPABILITY PACK · 2026

Carpentry and construction, built right.

Structural carpentry, framing, fit-outs and full carpentry packages for Melbourne's builders, developers and commercial clients.

BASED
Melbourne, VIC

ESTABLISHED
2024

INSURANCE
Fully insured

DELIVERY
Director-led

Who we are, what we build, and how we run.

A straight read of our capability, our team, and the way we deliver carpentry and construction scopes in Melbourne — for builders, developers, and direct clients.

01	A letter from the directors	p. 03
02	Who we are	p. 04
03	By the numbers	p. 05
04	Capabilities	p. 06
05	Sectors we work in	p. 08
06	Two ways to engage us	p. 09
07	Labour rates	p. 10
08	How we work	p. 11
09	Selected projects	p. 12
10	What clients say	p. 15
11	The directors	p. 16
12	Safety & operating principles	p. 17
13	Contact	p. 18

We started Machells to build a carpentry business that actually runs like a business.

The three of us — Jack, Conor and Alex — came up on tools. We've all watched good scopes go sideways because the paperwork didn't exist or the program wasn't honoured.

Machells is our answer. Carpenters by trade, commercial operators by discipline. Programs honoured. Scopes priced properly. Variations written down. Crews inducted. A director on every job.

Our crew is directly-employed — labourers, carpenters, formworkers, leading hands and foremen, all on our books. That's how the standard stays consistent across every site we take on.

This pack lays out what we build, how we run jobs, and what working with us looks like.

Send us a scope — we respond within one business day, and if we're not the right fit, we'll tell you.

Jack Goodwin

SAFETY & OPS

Conor Keddy

DELIVERY & SITE

Alex McCann

COMMERCIAL & CLIENT

A carpentry business, run like a construction business.

WHAT WE DO

Machells is a Melbourne carpentry and construction contractor. Structural carpentry, framing, fit-outs, formwork and full carpentry packages for builders, developers and commercial clients.

HOW WE'RE STRUCTURED

Three directors, each owning a side of the business — Safety & Operations, Delivery & Site, and Commercial & Client. No middle layer.

WHY WE EXIST

Construction moves too fast for carpentry crews that can't keep pace with programs, documentation and safety expectations. We built Machells to close that gap — carpenters by trade, commercial operators by discipline.

DIRECTLY-EMPLOYED CREW

From labourers through to leading hands, carpenters and formworkers — our crew is on our books, not sourced through an agency. That's how the standard stays consistent across every job we take on.

Built like a business.

A snapshot of the operation — active projects, crew capacity, and the builder and developer partners we work with.

12⁺

ACTIVE PROJECTS ACROSS MELBOURNE

14,000 m²

FRAMING DELIVERED IN 2025

8⁺

BUILDER & DEVELOPER PARTNERS

100%

INSURED, INDUCTED, SITE-READY

Nine capabilities, one contractor.

01	Structural Carpentry	Load-bearing framing, subfloors, roofs and structural elements built to engineering and on program.
02	Framing	Wall, floor and roof framing for residential and commercial builds, delivered by crews who read the drawings properly.
03	Residential Builds, Extensions & Renovations	Full carpentry delivery for new homes, extensions and renovations across Melbourne.
04	Commercial Carpentry	Carpentry scopes on commercial projects, resourced and programmed to head-contractor standards.
05	Fit-outs	Interior carpentry, partitions, ceilings, joinery coordination, and finishes for commercial and retail spaces.

06	Carpentry Packages	End-to-end carpentry scopes on builder-led projects, from frame through to lock-up and finish.
07	Modular Installations & Refurbishments	Fit-out, refurbishment, blocking and levelling, insulation, covered walkways, decking, stairs and ramps for modular buildings.
08	Formwork	Vertical and horizontal formwork — suspended slabs, walls, columns and stairs. Set out from engineer's drawings, cycled on program.
09	Decking, Pergolas & External Structures	Hardwood and composite decking, pergolas, covered walkways, external stairs, balustrading and timber cladding. Built for the weather.

ALSO AVAILABLE · LABOUR CREWS

You manage the site. We send the crew.

Directly-employed carpenters, labourers, formworkers, leading hands and foremen — charged by the head. Rates brochure sent within one business day.

[REQUEST RATES →](#)

Range matters.

We move between commercial programs and residential quality expectations every week. That range shows up in how crews are resourced and how jobs are documented.

S01

Residential

Custom homes, extensions and renovations for builders and direct clients.

S02

Multi-residential

Townhouses and apartment projects for developers and head contractors.

S03

Commercial

Office, retail and industrial projects requiring commercial-grade carpentry.

S04

Hospitality & Retail

Interior carpentry, partitions, joinery coordination, and finishes.

S05

Developer Partners

Repeat carpentry scopes across a development program.

Same crew. Two ways to work with us.

Same directors on the job, same standard, two different commercial structures. Pick the one that fits how you run your projects.

A

Scope delivery

We price the scope, manage the crew, hit the program and hand it over. One contractor, one point of accountability, one signed-off quote.

- Structural, framing, residential, commercial, fit-outs, packages
- Director on every job, end to end
- QA, variations and documentation handled

[SEE CAPABILITIES →](#)

B

Labour crews, by the head

You manage the site. We send the crew. Full-time, directly-employed carpenters, labourers, formworkers and leading foremen — charged

- Carpenters, labourers, formworkers, leading hands &
- Directly-employed, not casual
- Rates and brochure sent within one business day

[REQUEST RATES →](#)

LABOUR RATES

Standard hourly rates for our directly-employed crews—first 8 hours, straight time. Overtime and weekend loadings below.

	Standard Hourly Rate (First 8 Hours)
LABOUR	
General Labour / General Delivery Driver (Fuel not inclusive)	\$50.00
SKILLED LABOUR	
Level 1: EWP Boom Lift Traffic Control Fork Lift Operator Confined Spaces	\$60.00
Level 2: Electrical Spotter Hoist/Alimak Operator MR/HR Driver Health & Safety Rep	\$65.00
TRADE ASSISTANT	
Level 1: Carpenter Plasterer Scaffolder Landscaper	\$62.50
Level 2: Electrician Plumber	\$67.50
QUALIFIED TRADES	
Level 1: Carpenter Plasterer Basic Scaffolder Painter Tiler	\$85.00
Level 2: Formworker Advanced Scaffolder Steel Fixer Bricklayer	\$90.00
PREMIUM CARPENTRY	
Premium Carpenter	\$95.00
Site Supervisor	\$100.00

OVERTIME RATES

- 1.5x After 8 hours on Weekdays (7am–6pm), Saturday Hours (7am–6pm), and Weekday Night Works (6pm–7am)
- 2x For All Public Holidays, Sunday, and Weekend Night Works

ALL RATES IN AUD, EXCLUSIVE OF GST · MIN. 4-HOUR CALL-OUT · RATES CONFIRMED IN WRITING ON QUOTATION

Four stages. No surprises.

From first enquiry through to handover — a straight, documented process that keeps the job moving and the client in the loop.

01 · ENQUIRY

Scope & brief.

You send drawings or a brief. We review, flag questions, and get on a call within 48 hours. If we're not the right fit, we'll tell you.

02 · PLANNING

Price & program.

We price the scope properly. You get a clear quote, a program, a resourcing plan, and a single point of contact.

03 · DELIVERY

On site, on program.

Crews run to program, safety-first, with a director across the job. Weekly updates — or daily on fast programs.

04 · COMPLETION

Closed out properly.

Defects closed, documentation handed over, site left clean. The relationship doesn't end at PC.

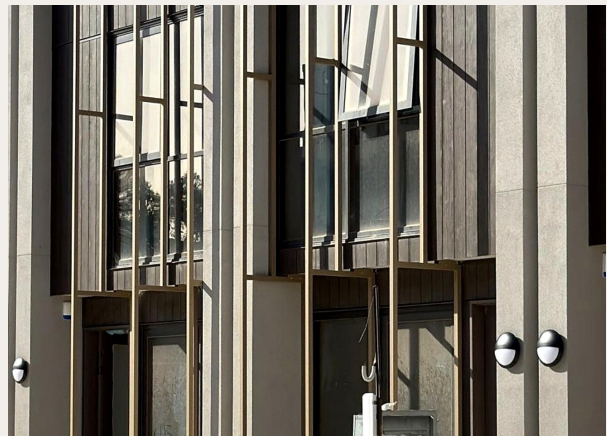
Selected projects

Recent work across Melbourne — named head contractors, named scopes, real programs. Photos from live sites.



MULTI-RESIDENTIAL · BRIGHTON · 2025
D5 Build — Brighton

Full carpentry package on a luxury new build for D5 Build — structural framing through to finish.



COMMERCIAL · NORTH MELBOURNE · 2025
CAS Construction — North Melbourne

Timber cladding and external carpentry package on a commercial facade for CAS Construction.



MODULAR · BALLARAT · 2025
Ausco Modular — Ballarat

Modular building install for Ausco — site works, crane lifts, tie-down and finish carpentry.



FORMWORK · MOORABBIN · 2025
Cardabuilt — Moorabbin

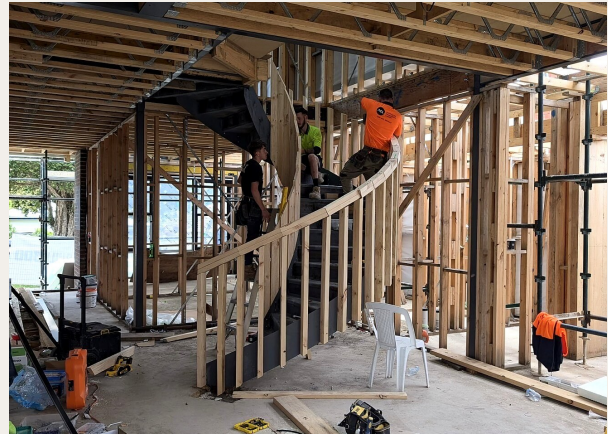
Suspended slab formwork scope for Cardabuilt — set out, cycled and stripped on program.



RESIDENTIAL · ARMADALE · 2025

Majora Building Solutions — Armadale

Framing and roofing carpentry for Majora Building Solutions on a residential new build.



PRIVATE RESIDENTIAL · TOORAK · 2025

Private residence — Toorak

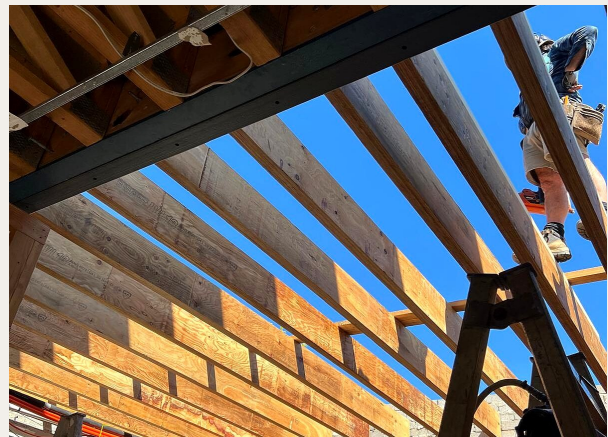
Custom spiral staircase carpentry on a high-end Toorak residence.



COMMERCIAL · NORTH MELBOURNE · 2025

Hunt Group & Co — North Melbourne

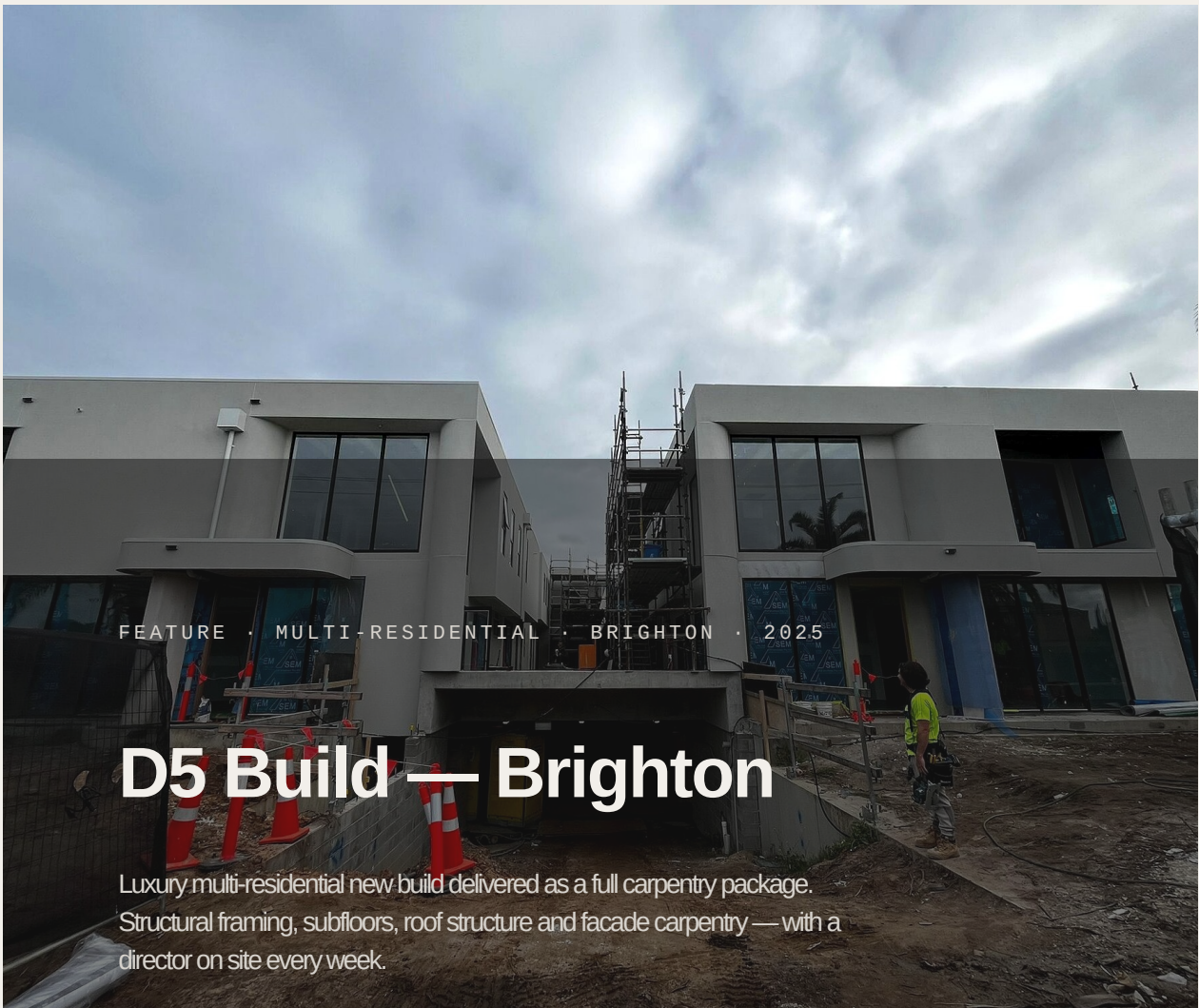
Carpentry interface with structural steel joists and ceiling framing for Hunt Group & Co.



RESIDENTIAL · OAKLEIGH · 2025

Mildav Projects — Oakleigh

Suspended floor and first-storey framing package for Mildav Projects.



FEATURE · MULTI-RESIDENTIAL · BRIGHTON · 2025

D5 Build — Brighton

Luxury multi-residential new build delivered as a full carpentry package. Structural framing, subfloors, roof structure and facade carpentry — with a director on site every week.



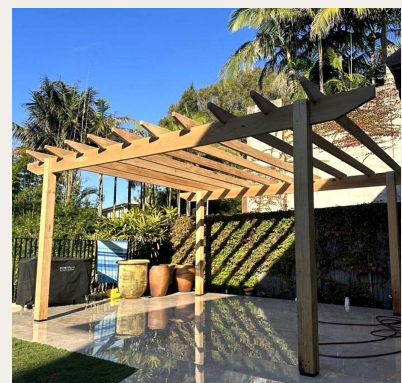
MODULAR · PORT MELBOURNE

Ausco — Port Melbourne



FORMWORK · TRUGANINA

Cardabuilt — Truganina



RESIDENTIAL · BENTLEIGH

Private residence — Bentleigh

Words from the head contractors we work with.



Machells have been a great contractor to work with. Their team understands what's required on site and gets on with the job without needing constant supervision.

Serg Djurovic

D5 BUILD · HEAD CONTRACTOR



We've worked with Machells across multiple projects and have always found them reliable, organised, and easy to deal with. Their carpentry work is completed to a high standard.

Matt Spinosa

MAJORA BUILDING SOLUTIONS



We've engaged Machells for carpentry works and have been impressed with their professionalism and efficiency. They bring a solid understanding of construction processes.

Nic Holt

AUSCO MODULAR



Machells have been a dependable contractor for our projects, bringing a high level of professionalism and consistency to their work. Well-structured, clear communication.

Neil Milne

MILDAV PROJECTS

Three directors. One point of accountability.

Every project is overseen by one of us. No middle layer, no message-relay. The person running your job has authority to make calls on site.



SAFETY & OPS
Jack Goodwin

Jack owns safety, compliance, documentation, scheduling and subcontractor coordination. SWMS, inductions, ITPs and programs in place before day one — not chased at 7am.



DELIVERY & SITE
Conor Keddy

Conor owns on-site delivery, crew management, program and build quality. Across the site every week — coordinating crews, running QA, owning the build standard.



COMMERCIAL & CLIENT
Alex McCann

Alex owns client relationships, enquiries, quoting and commercial management. First point of contact on every new scope — quote, variation, final account.

Safety is part of the scope.

DOCUMENTED

SWMS, JSAs and ITPs drafted per site — not pulled from a template drawer.

INSURED

Public liability and workers' compensation in full coverage. Certificates on request.

INDUCTED

Every crew member carries current White Card, site inductions, and trade qualifications.

OPERATING PRINCIPLES

Five principles. No slogans.

01 **Own the scope.**

If we take it, we own it — from the first RFI to the last defect.

02 **Say what's true.**

Bad news early beats good news late. Clients get the real version.

03 **Run the program.**

The program is a contract. Changes get documented, not absorbed.

04 **Document the work.**

SWMS, ITPs, variations, RFIs — all written. No verbal agreements.

05 **Leave it better.**

Clean sites, tidy handovers, defects closed out.

Have a scope? Send it through.

We respond to every enquiry within one business day. If it's urgent, call us directly.

SCOPES & PROJECTS

Alex McCann

Commercial & Client

projects@

machellsconstruction.com.au

+61 420 456 927

LABOUR & CAREERS

Jack Goodwin

Safety & Operations

jack@

machellsconstruction.com.au

+61 420 456 927

OFFICE

Machells Construction

ABN 24 681 868 959

7C/354 Reserve Road

Cheltenham VIC 3192